

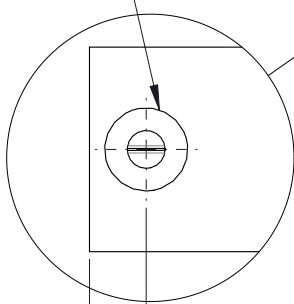
## WEBBING REINFORCING

STITCHED INTERNALLY TO ENSURE  
THAT Ø 50 BANNER ARM  
CANNOT PUSH THROUGH END



SECTION A-A  
SCALE 1 : 5

Ø 10 (ID)  
BRASS EYE  
THROUGH WEBBING  
REINFORCING



15

ADDITIONAL  
BRASS EYES  
AS REQUIRED  
UNTIL <1000mm  
FROM THE TOP

1000 MAX.  
BRASS EYE  
SPACING

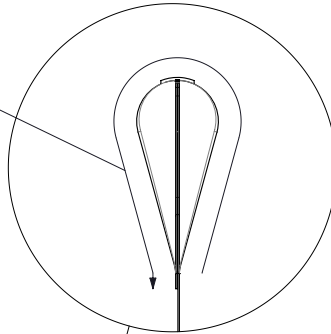
R200

400

400

UP TO  
1500

+300mm TO  
FORM LOOP



UP TO  
4500

CABLE TIE  
TO EYE-BOLTS  
IN MAST TRACK

WEBBING  
REINFORCING TO  
PREVENT FRAYING

Ø 10 (ID)  
BRASS EYE

### IMPORTANT:

BANNER SIZE MUST BE SPECIFIED IN CONSULTATION  
WITH AN ENGINEER CONSIDERING POLE TYPE, HEIGHT,  
WIND REGION, FOOTINGS AND MORE.

TYPICAL MAXIMUM BANNER SIZE IS 3.0 x 1.0m WITH  
SINGLE TOP ARM IN CYCLONE PRONE AREAS

### NOTE

PATENT PENDING  
ALL INFORMATION CONTAINED IN THIS DRAWING IS  
CONFIDENTIAL AND MUST NOT BE DISCLOSED TO OR COPIED  
BY ANY THIRD PARTY WITHOUT WRITTEN CONSENT FROM  
GOODCART AUSTRALIA PTY LTD.

COPYRIGHT GOODCART AUSTRALIA PTY LTD 2023  
AUSTRALIAN DESIGN REGISTERED PATENTS APPLIED FOR

## BANNER FINISHING SPECIFICATION

ISSUED: 28MAR2023

**Multipole™**  
Smart City Solutions